



High Road, Broxbourne, EN10 7BN

Westwood Leber are delighted to bring to market this exceptional two-bedroom ground floor apartment, ideally positioned within the highly sought-after Richmond Court development in Broxbourne. Having been fully refurbished to an outstanding standard by the current owners, this stunning home offers show home condition throughout and is perfectly suited to first-time buyers, downsizers, and investors alike.

The property boasts a bright and spacious open-plan living/kitchen area, beautifully designed with modern finishes and high-quality fittings, creating a stylish and sociable living space. The sleek, contemporary kitchen is fully integrated and thoughtfully laid out to maximise both space and functionality.

There are two well-proportioned bedrooms, both finished to an impeccable standard, alongside a luxurious and modern bathroom suite. Every aspect of this home has been carefully considered, resulting in a turnkey property ready to move straight into.

Further benefits include allocated parking and well-maintained communal areas.

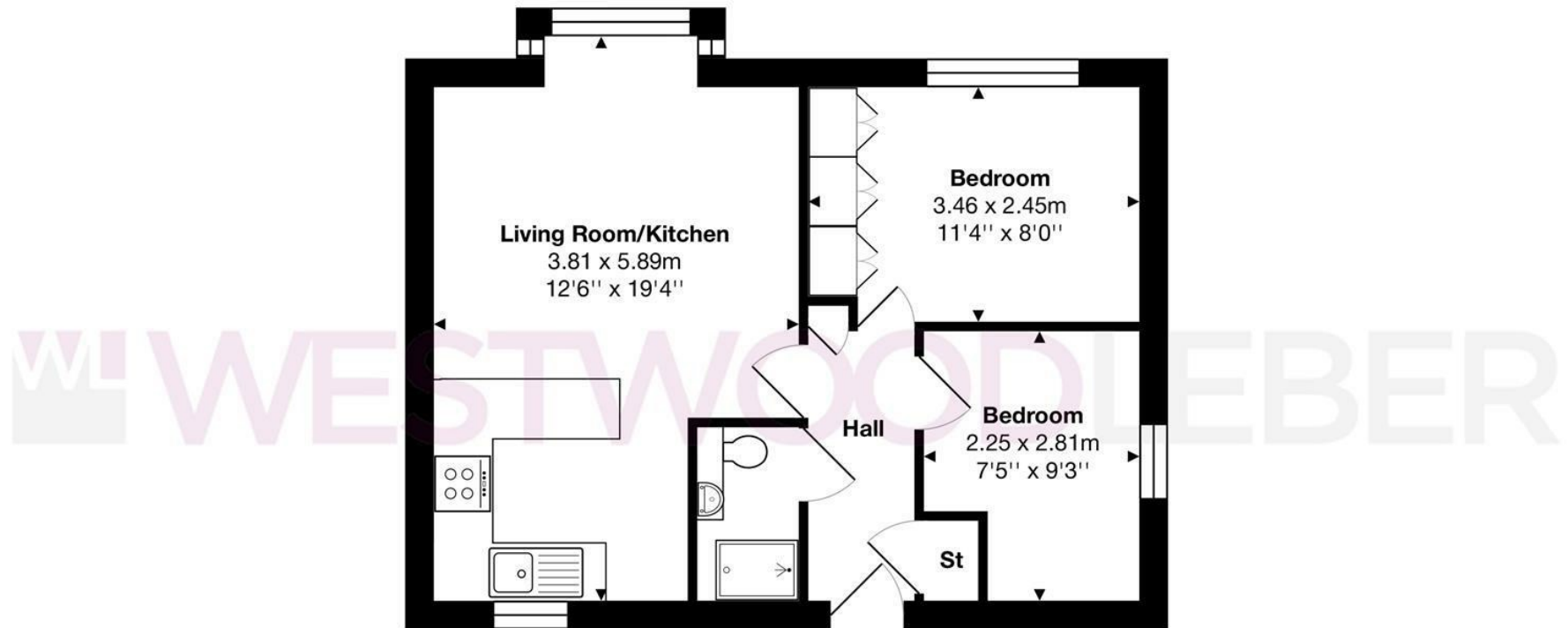
Richmond Court is ideally located just a short walk from Broxbourne Train Station (under 10 minutes), offering fast and frequent services into London Liverpool Street, making it perfect for commuters. Broxbourne High Road is also within easy reach, providing a variety of shops, restaurants, and local amenities, while the surrounding green spaces and riverside walks add to the appeal of this desirable location.

A truly impressive apartment, early viewing is highly recommended.



W WESTWOODLEBER

W WESTWOODLEBER
LET US GUIDE YOU HOME



Total Area: approx. 40.4 m² ... 434 ft²

THE FLOORPLAN IS FOR ILLUSTRATIVE PURPOSES ONLY AND IS NOT TO SCALE.
Measurements and features are approximate and may differ from the actual property. Verify all details independently; no liability is accepted for errors or omissions.

Property marketing provided by www.fotomarketing.co.uk

